



2019 Project Review Sheet (2020 Construction)

City Council District 7 (Ballot # 7D)

Project #	19-282
Project Title:	Blinking crosswalk light
Location:	Neighborhood: Magnolia, 98199 Area: 34th Ave W by Catherine Blaine K-8

SDOT Contact Information

SDOT Reviewer Name: Brian Dougherty

Reviewer Phone Number: 206-684-5124

Review Date: July 26, 2019

SDOT Project Summary

SDOT approves project

- ☐ Yes
- ☒ Yes, with revisions
- ☐ No

Comments: Traffic data does not support installing rectangular rapid flashing beacons (RRFBs). Instead SDOT recommends installing a curb bulb on the east side of 34th Ave W

There is an opportunity to partner with another program:

- ☐ Yes
- ☒ No

Partnering Program: N/A

Total Project Cost: \$98,600

**Solution and Comments:**

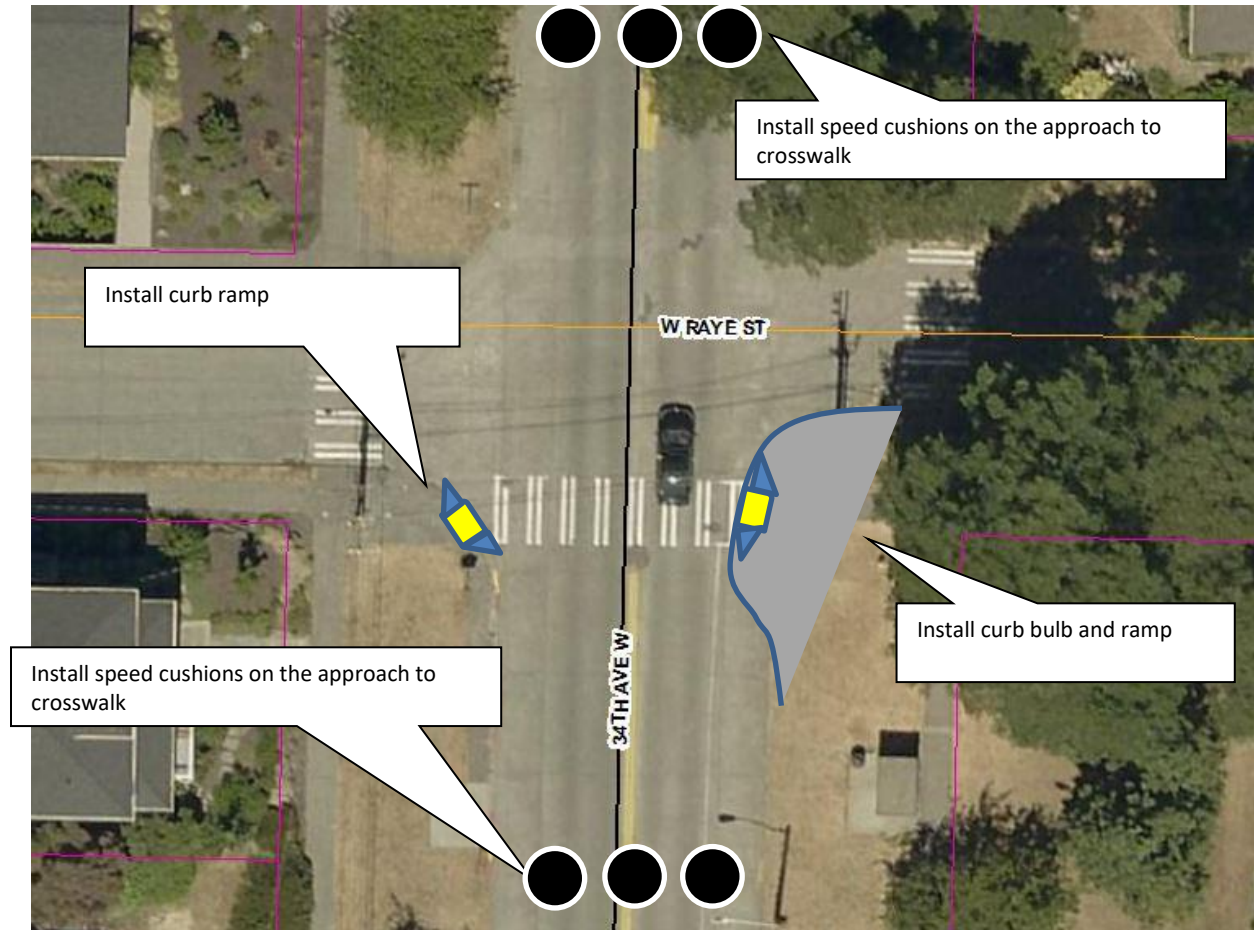
This review has been completed for use in the 2019 Your Voice, Your Choice: Parks & Streets process.

Crosswalk flashing lights are installed at locations based on the speed and volume of traffic. In this case, the combined speed (32.2 mph 85th percentile speed) and volume (5,844 vehicles per weekday) does not meet our criteria for flashing lights for a school crosswalk.

This location could benefit from the addition of a curb bulb on the east side of the street, and a companion curb ramp to shorten the crossing distance and make it more accessible. Additionally, since it is a school zone and the 85th percentile speed is more than 5 mph more than the 25 mph default speed limit, install speed cushions on the approaches to the crosswalk.



Image:





Information Provided by Community Members

Project Idea: Blinking crosswalk light

Need for Project: To keep pedestrians safe when crossing

Community Benefit from Project: Everyone who walks - especially children



Risk Registry

SDOT Review	Drainage impacts	Constructability	Community process
Low – need to design for Metro	Medium – may need to install a new inlet	Low	Low

Cost Estimate

Design Phase	
Preliminary Engineering (Survey) Costs	\$ 5,000
Project Management Costs (City Labor)	\$ 1,000
Design Costs (Consultant Fees, if externally designed, internal labor otherwise)	\$ 10,000
Subtotal – Design Phase Costs	\$ 16,000
Design Contingency (10% of Design Phase Subtotal)	\$ 1,600
Total Design Phase Costs	\$ 17,600
Construction Phase	
Construction Costs (include urban forestry, signs & markings, traffic control, layout or construction staking as necessary)	\$ 30,000
Drainage Costs	\$ 24,000
Estimating Contingency (10-20%)	\$ 5,000
Subtotal – Construction Costs	\$ 59,000
Construction Management (10-25% of Construction Cost)	\$ 10,000
Construction Contingency (20%)	\$ 12,000
Total Construction Phase Costs	\$ 81,000
Total Project Cost = Total Design and Construction Phase Costs	\$ 98,600